

REMY RANI

H A I R E X T E N S I O N S

Who we are in a nutshell

We are one of the largest South Indian manufacturers and distributors of Raw Virgin Remy Hair.

Flexibility: We maintain control over every stage of the supply chain, from hair allocation to processing and shipping

Origin: All hair sourced strictly from temples contracted directly with us from the South of India (Andhra Pradesh, Karnataka, Kerala, Tamil Nadu, and Telangana).

- We primarily deal in Raw Virgin Remy Hair from single donors.
- Extensions starting at 10" and above guaranteed to weigh at least 100g/3.5oz.
- Variety of colors and hair extensions available from bundles, frontals, closures, clip-ons, keratin tips, tape-ins, and full wigs.
- Capacity to ship orders up to 500kg/1100lbs to clients within a timeframe of 2 weeks (Frontals & Closures will take 2+ weeks due to labor involved).



What we Offer

Our primary focus is on sourcing high-quality hair extensions that are Indian Virgin Remy Hair, also known as 'Raw' or 'Unprocessed' hair. These extensions are sourced from temples in South India and are obtained from single donors, ensuring the highest quality. The hair is single drawn, meaning it has a natural taper or layered look.



Additionally, we also offer an alternative grade of hair known as 'Standard Human Hair' that is also 'Raw' or 'Unprocessed'. This grade of hair is sourced from various salons and household donors, carefully sorted based on size, and then transformed into extensions. It is available in both single drawn and double drawn options.

Why Consider Remy Rani



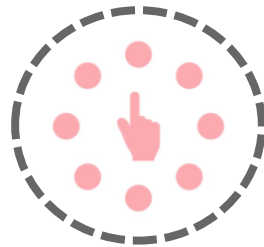
With more than 20 years of expertise, we have been offering the most exquisite range of 100% virgin Remy hair worldwide.



The extensions are crafted from authentic virgin Remy hair sourced directly from South Indian temples, showcasing the natural beauty and origin of the hair



Experience the excellence of our 100% chemical-free, top-notch hair extensions that guarantee zero shedding, zero tangling... providing only flawless, silky-smooth, and authentically natural hair

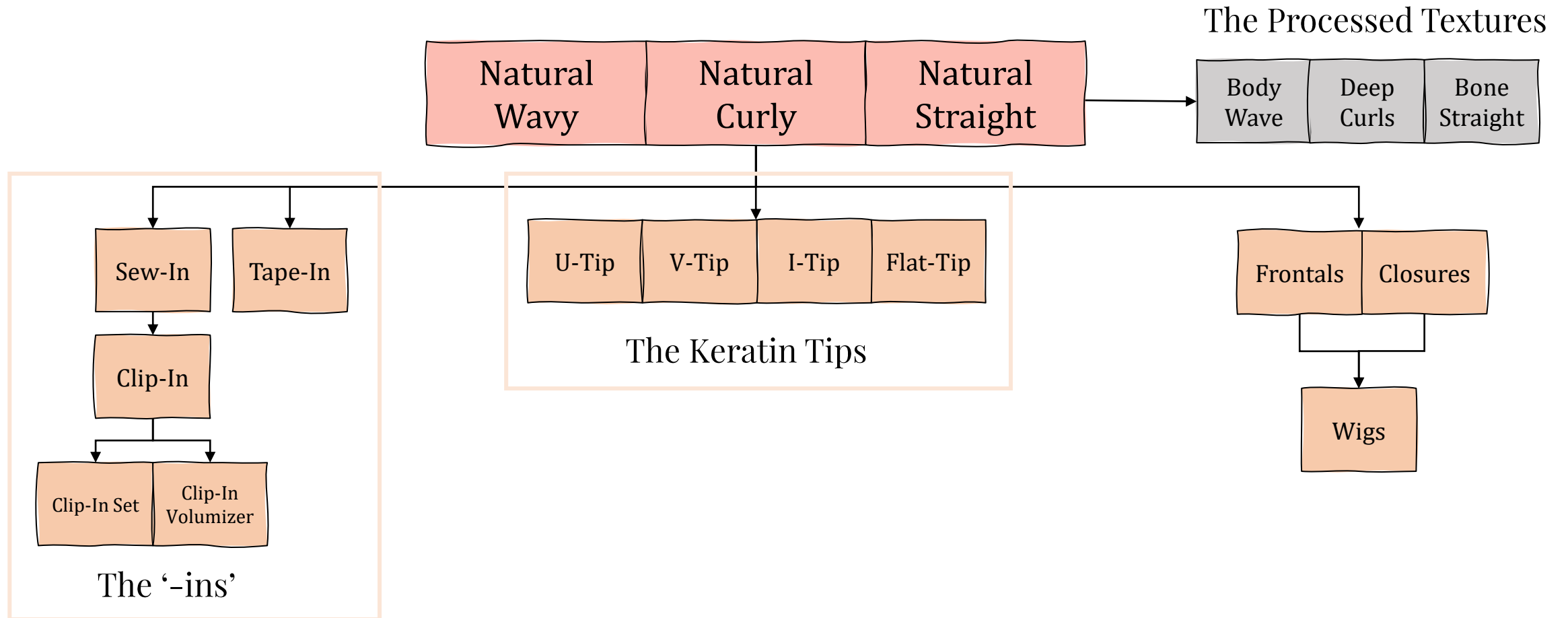


Discover our exceptional collection of clip-in extensions, tape-in extensions, bundles, closures, frontals, keratin tips, and wigs made from premium-grade, unprocessed virgin Remy hair.



Discover budget-friendly extensions that offer excellent value for your money.

Product Portfolio



*There are more processed textures available and depending on your selection the processing time can vary

Indian Curly Hair is highly sought after in the hair extension industry due to its unique characteristics. It is known for its natural and bouncy curls that add volume and texture to hairstyles. Indian curly hair is prized for its versatility and ability to hold curls for an extended period of time. It is a popular choice for individuals looking to add a touch of glamour and playfulness to their look.





Indian Straight Hair is known for its sleekness and smoothness, making it a preferred choice for those desiring a polished and sophisticated look. Known for its versatility, it can be easily styled into various hairstyles and holds well with heat styling tools. It is revered for its lustrous shine and ability to reflect light, giving it a healthy and radiant appearance. It is a popular option for achieving a sleek and elegant aesthetic that is timeless and effortlessly chic.

Indian Wavy Hair is renowned for its beautiful and natural-looking waves, making it a popular choice for those seeking a soft and elegant hairstyle. The texture of Indian wavy hair falls between straight and curly, offering a versatile and effortless look. It blends seamlessly with various hair types and can be easily styled to achieve different looks. Indian wavy hair is highly sought after for its ability to enhance volume and create a relaxed yet sophisticated appearance.





Sew-In

- Our default bundles are meticulously crafted using a three-headed sewing machine, guaranteeing triple stitching for exceptional durability.
- Each pack weighs approximately 100g.
- For optimal results, we highly recommend entrusting their installation to a reputable hair stylist who will expertly sew them into your natural hair, creating a robust and enduring look.
- We also offer processed textures that will cater to your specific needs through a steam wash process using our Natural Wavy Hair as the base, some of the client favorites are the Body Wave, Bone Straight and Deep Curl.

Tape-In

- Our Tape Extensions are created using virgin hair and incorporate a thin self-adhesive bond with a secure adhesive. This hair is naturally tapered, resulting in seamless blending of volume, color, and length.
- Each pack consists of 20 tape extensions, weighing approximately 100g.
- Tape Extensions are a professionally installed hair extension product that offers long-lasting color, length, and volume for months at a time. It is important to note that Tape Extensions should only be installed by a Certified Hair Extensionist





Clip-In

Clip-in extensions provide a convenient and versatile solution for instantly adding length, volume, and style to your natural hair and easy-to-use clip attachment. It comes in two formats

- Clip-in Set (Left)
- Clip-in Volumizer (Right)

Due to the added weight from the clip-band set, the weight range for the extension lengths can be seen below

10" -14" ~ 100g

16" - 18" ~ 120g

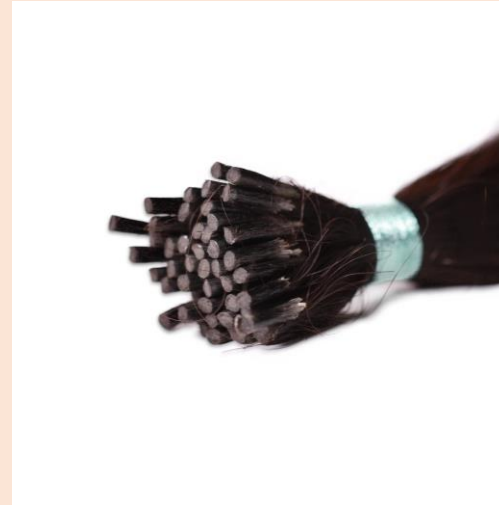
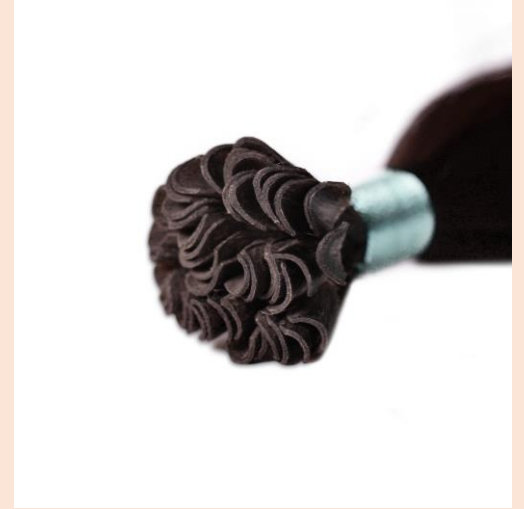
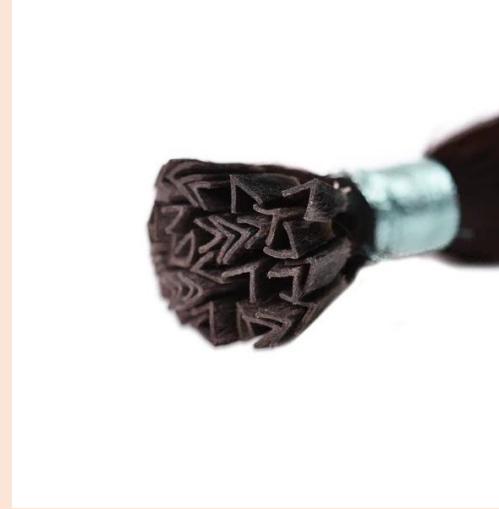
20" - 24" ~ 140g

26" - 30" ~ 160g



Keratin Tip

We steam perm our virgin hair to perfect the natural look. No chemicals, no silicone, just effortless hair that you'll be enamored with. We offer our hair extensions in various forms, including I-Tip, V-Tip, U-Tip, or Flat-Tip, providing flexibility and adaptability. Our tips can be seamlessly applied using either hot or cold fusion techniques, resulting in virtually undetectable extensions.



Frontals, Closures and Wigs

Our experts carefully hand-knit the premium hair into Frontals, Closures and Wigs onto a Swiss lace/HD Lace.

- Frontals dimensions offered (13x4 & 13x6)
- Closures dimensions offered (4x4 & 5x5)
- Wigs are made custom to order
- Available from 10" to 30" in Wavy/Straight/Curly



Colors We Offer

#010 - Ash Light Blonde
#002 - Darkest Brown
#012 - Golden Brown
#33 - Dark Auburn
#024 - Ash Blonde
#014 - Dark Blonde
#004 - Dark Brown
#001 - Jet Black
#008 - Light Chestnut Brown
#006 - Light Brown
#012 - Light Golden Brown
#018 - Golden Blonde
#22 - Light Blonde
#30 - Medium Auburn
#012 - Golden Brown
#01B - Natural Black
#027 - Strawberry Blonde
#613 - Platinum Blonde
#060 - Lightest Blonde

(*Code 613, 060 – will take 10 days due to the pigmentation process required to change the lustrous natural black color to a lighter shade)



#010 - Ash Light Blonde



#002 - Darkest Brown



#33 - Dark Auburn



#024 - Ash Blonde



#014 - Dark Blonde



#004 - Dark Brown



#001 - Jet Black



#008 - Light Chestnut Brown



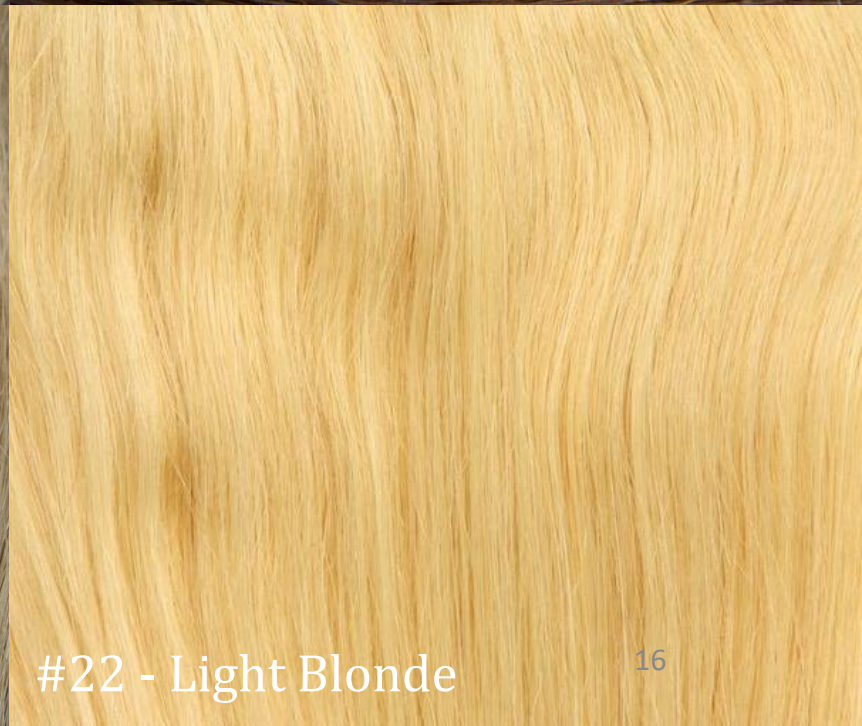
#006 - Light Brown



#012 - Light Golden Brown



#018 - Golden Blonde



#22 - Light Blonde



#30 - Medium Auburn



#012 - Golden Brown



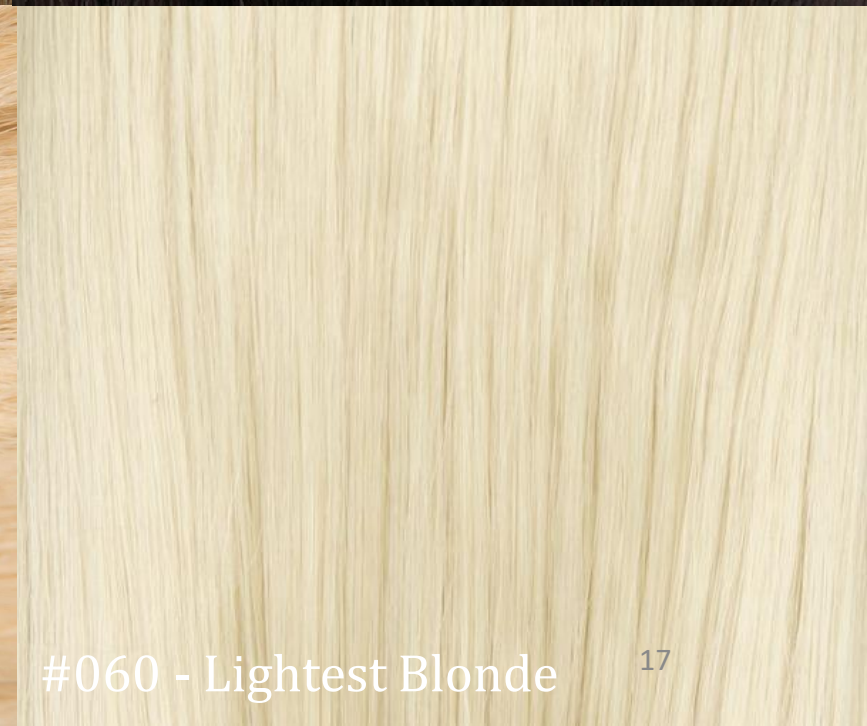
#01B - Natural Black



#027 - Strawberry Blonde



#613 - Platinum Blonde



#060 - Lightest Blonde

Contact Us


MENA Office

Sales Department

 +971 55 2561456

North America Office

Sales Department

 +1 (631) 771-2234